

GROGREEN® FEED&SHINE® BUXUS

Research and documentation 2019



Foliar feed for buxus plants

Available in a ready-to-use or concentrated formulation.

Description

A tailor-made product for Buxus (Box) plants that keep them clean and healthy by ensuring they are fully nourished and also physiologically equipped to be capable of looking after themselves.

Objective

Feed & Shine Buxus is formulated with a specifically blended range of both micronutrients and plant oils that compliment soil nutrients and provide additional plant vigour to achieve strong and robust plants.

Benefits

Buxus plants are prone to certain diseases, generally labelled as 'blight,' which are most likely to occur when the plants are exposed to infection and not fully equipped to resist attack. Whether grown in pots or the soil, this risk can be mitigated when plants are assisted by having stress factors removed and their full requirements provided.

Feed & Shine Buxus seeks to do just that, by giving the Box plants what they need to meet their nutrient shortfall and at the same inducing the plant's immune responses to attack.

Commercial Summary of Trials Outcomes

The application of GroGreen® Feed & Shine® Buxus resulted in more vigorous growth of the Box plants, both in their foliage and their roots, thereby out performing the leading competitor product.

All the treated plants remained healthy throughout the trial period.

No visible residue was observed from the application of GroGreen® Feed & Shine® Buxus, whereas the competitor product left a mild blue deposit on leaves.

In conclusion, this GroGreen® Feed & Shine® Buxus product appears to be ready for market, suited to Home & Garden sector.

GroGreen Buxus F&S - Trial Conclusions

- No phytotoxicity was observed for 1% or 2% concentration, weekly or fortnightly.
- No significant disease incidence was recorded in any of the treatments
- The trial demonstrated significant ability by the GroGreen F&S to improve Buxus growth
- Although not statistically valid, plant vigour appeared to be greater in all F&S treatments
- Both shoot regrowth and overall root growth appeared to be better for Buxus F&S
- The GroGreen Buxus F&S at 1% concentration appeared to produce the best results
- The GroGreen Buxus F&S performed better than the competitor 'Top Buxus'.
- The F&S product appears to be ready for market, suited to Home & Garden sector

GROGREEN® FEED&SHINE® BUXUS

Research and documentation 2019

+ Environmentally friendly

An extra benefit is to the environment, as Feed & Shine Buxus takes away the need for routine chemical applications and is therefore more beneficial to its natural surroundings.

From trials data, the recommended applications:

- Plant type: Buxus (Box) plants, all varieties
- Dosage: Spray lightly on all leaves up till run-off
- Rate: Every 10 – 14 days during and 2 weeks before the growth season
- Seasonality: April to September
- Conditions: Apply to dry leaves, in dry weather though NOT in direct sunlight
- Mixing ratio: 1: 100 [0.5 litres concentrate mixed in 50 litres of water]
NB 1 cap full (30 ml) is enough for 3 litres of water
- Methods: Shake mixture well before dilution
Apply using a garden sprayer with a nozzle for a fine droplet size
Once diluted, use mixture within 8 days
- Storage: Keep the concentrate product in a frost-free place.
- Feed & Shine Buxus: Contents
 - Non plant nutrition: Tea tree oil0.33%
 - Citronella oil0.33%
 - Clove oil0.33%
 - Surfactant10.0%
 - Nutrients: Nitrogen (urea N)2.0%
 - Iron (chelated/ soluble Fe) 0.10%
 - Magnesium (chelated / soluble Mg) 0.10%
 - Manganese (chelated / soluble Mn)..... 0.10%
 - Zinc (chelated / soluble Zn).....0.10%
 - Copper (chelated / soluble Cu)0.10%
- pH value: 4.0
- Colour: Green



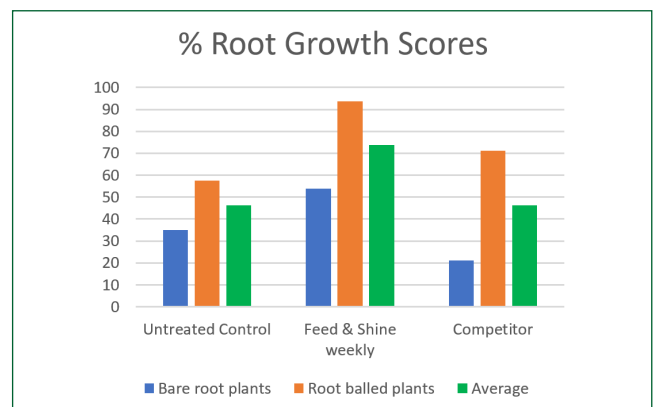
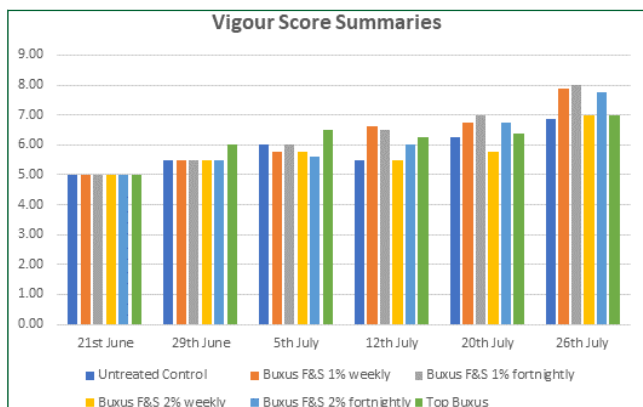
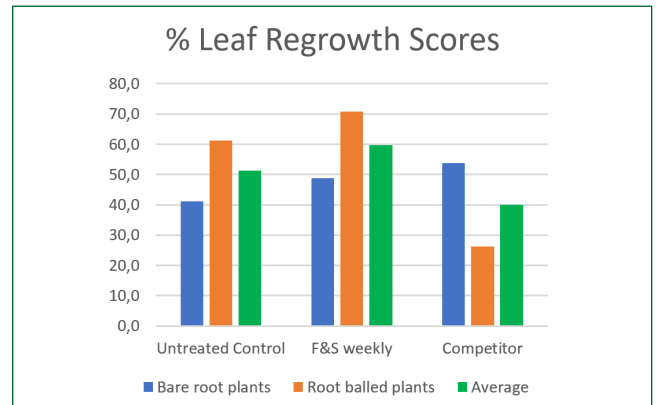
Untreated control.

Feed & Shine bi-weekly.



Final root assessments untreated control.

Final root assessments Feed&Shine weekly.



GROGREEN® FEED&SHINE® BUXUS

Research and documentation 2019

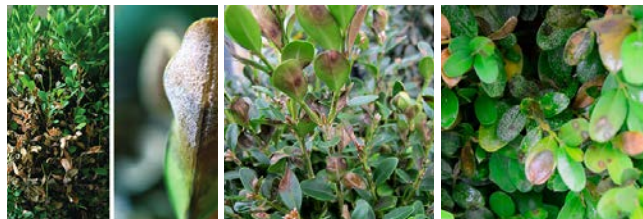
Trial data:

Experimental trials conducted on the product by independent research.

A replicated trial on Box was conducted in 2019 demonstrating very good product efficacy, as recorded below:

Plants:	Boxwood (Buxus)
Type:	Potted (from root-ball or bare root)
Numbers:	96 plants (48 root-balled, 48 bare root)
Treatments:	6; Untreated Control, 4 rates and competitor
Replicates:	8 plants each root type / treatment
Final Conclusions:	No phytotoxicity on treated plants No disease evident on treated plants
Site:	Evesham Nursery, UK
Dates:	May to August 2019
Assessments:	- Plant vigour scores - Phytotoxicity - Disease incidence - Shoot regrowth scores - Root growth scores
Graphs (below):	Positive growth benefits from application of Feed & Shine
Feed & Shine	Buxus

Typical diseases



Cylindrocladium buxicola

Buksbomkvistdød

Pseudonectria buxi



ESSENTIAL PLANT OIL
TECHNOLOGY

